



Stanislaus County Geographic Information Systems (GIS)

Introducing: "Public Inquiry Map" Updated & Redirected

Effective July 1, 2019, the Stanislaus County GIS pages will be relocated. As of July 1, you will be automatically be redirected to the new locations. Please update your link(s) accordingly.

Thank you!

Stanislaus County
IT Central – GIS

Map Usage Disclaimer

The Stanislaus County GIS (Geographic Information System) webpages are a Public Resource of General Information. Stanislaus County GIS Division provides this information with the understanding that it is not guaranteed to be accurate, correct or complete and any conclusions drawn from such information are the sole responsibility of the user.

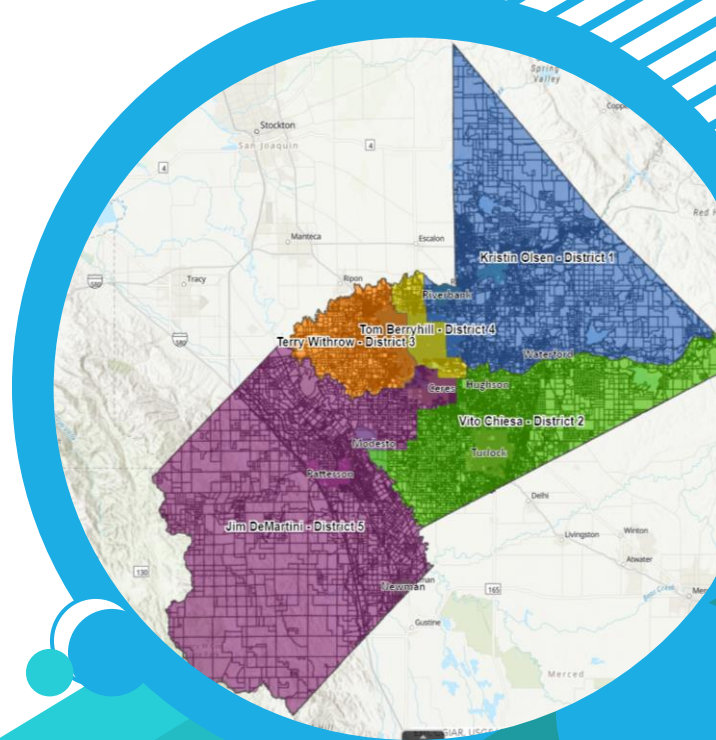
Stanislaus County makes no warranty, representation or guaranty as to the content, sequence, accuracy, timeliness or completeness of any of the database information provided herein. The reader should not rely on the data provided herein for any reason. Stanislaus County explicitly disclaims any representations and warranties, including, without limitation, the implied warranties of merchantability and fitness for a particular purpose.

Stanislaus County shall assume no liability for:

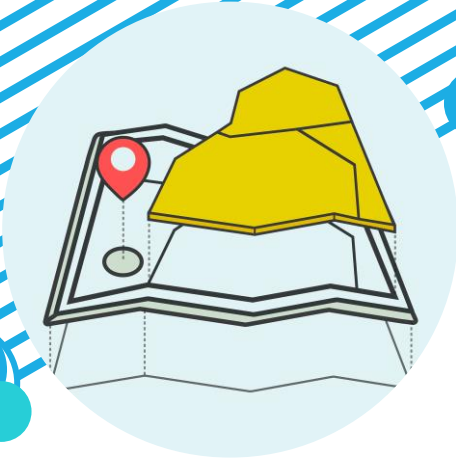
1. Any errors, omission, or inaccuracies in the information provided regardless of how caused; or
2. Any decision made or action taken or not taken by reader in reliance upon any information or data furnished hereunder.

Availability of the Stanislaus County Map Server is not guaranteed. Applications, servers, and network connections may be unavailable at any time for maintenance or unscheduled outages. Outages may be of long duration. Users are cautioned not to create dependencies on these services for critical needs.

All Rights to this data are reserved. The use of this application indicates your unconditional acceptance of this disclaimer.



General Inquiries, please email: GISCentral@stancounty.com
For Stanislaus County GIS Technical Support, please email HelpDesk@stancounty.com or call **(209) 525-4357!**



Stanislaus County Geographic Information Systems (GIS)

Quick Start Guide – Then & Now

Administered by **IT Central - GIS**
 Powered by ESRI

Explore the different possibilities by learning how to navigate the updated interface!



Window Header Top Row Navigation



Bottom Left Side of Window Navigation

THEN...

- LAYERS
- COUNTY LAYERS
- COUNTY CORRIDORS
- CITY OF RIVERBANK
- AERIALS
- BASEMAPS
- MEASUREMENT
- SEARCH BY ADDRESS, APN OR INTERSECTION
- ZOOM

- A. **LEGEND** Introducing a convenient legend with comprehensive coding!
- B. **LAYER LIST** Toggle between useful layers based on current availability, including Public Parcels!
- C. **BASEMAP GALLERY** Switch between various basemap types, return to the Topographic basemap at any time.
- D. **DRAW** Select from different modes and colors to mark up your map for one-time use.
- E. **PRINT** Print in various layouts and formats for your convenience!
- F. **MEASUREMENT** Select one of the three tools to measure Area, Distance or Location into various unit types. Click to contour the desired space and hit 'Clear' anytime to start over!
- G. **SEARCH ADDRESS, APN OR INTERSECTION** Use the down arrow for useful search criteria presets or start searching for a location based on keywords. Examples: by Address like '1010 10th street', by APN like '123456789', by Intersection like 'Briggsmore & Coffee'

NOW!

- H. **COUNTY CORRIDOR LAYERS** North County Corridor (NCC) Layers have been moved from the right side to the left side of your navigation, now with more comprehensive descriptions!
- I. **CITY OF RIVERBANK LAYERS** Zoning and General Plan have also been moved from the right side to the left side of your navigation, now with more comprehensive descriptions!
- J. **ZOOM** Click to zoom & scroll in or out to zoom too! The same intuitive feature is still available!
- K. **HOME DEFAULT EXTENT** Click on this icon to reset your map back to view the entire County line!
- L. **MY LOCATION** When on a mobile device, allow the site to assist you further based on your current location!